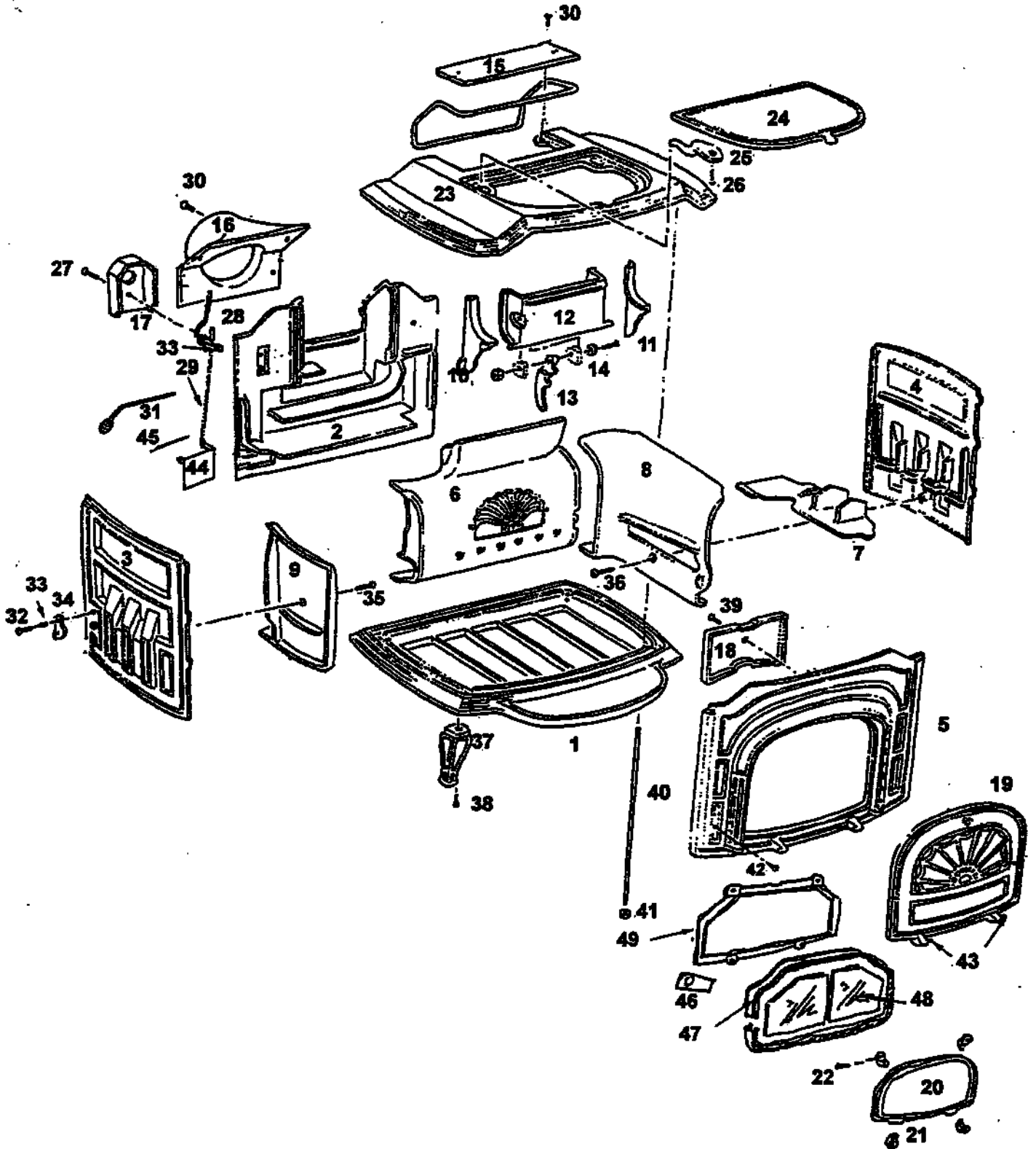


RESOLUTE II & I MODELS # 0042 & 0043



#0043 Resolute III/
#0042 Resolute II

Resolute

MODEL # **0043 RESOLUTE II & RESOLUTE I**
0042 RESOLUTE II WITH GLASS PANELS

FEATURES: **RESOLUTE II** - WAS MANUFACTURED 12/23/81 THROUGH 6/28/83.
IT HAD A GRIDDLE THAT SAT FLUSH WITH THE TOP.
RESOLUTE I - MANUFACTURED 3/5/80 THROUGH 6/28/93
GRIDDLE SAT ABOVE THE TOP.
BOTH HAVE SINGLE DROP DOWN DOOR, SINGLE PIECE
FIREBACK & THE DAMPER PIVOTED ON LEFT & RIGHT EARS.

DIAGRAM #	ITEM #	PART DESCRIPTION
1	NA-1301522	BOTTOM
2	NA-1301689	BAGK
3	NA-1301546	LEFT-END
4	NA-1301554	RIGHT-END
5	NA	FRONT-WITH-SINGLE-DOOR
6	NA	SINGLE-FIREBACK
SUBSTITUTE:	0005864	RES III FIREBACK KIT (INCLUDES: UPPER FB & DAMPER, LOWER FB, BOLTS FOR THE FB & BOLTS FOR THE LEFT & RIGHT INSERT)
	0005863	UPPER FB & DAMPER ASSEMBLED
	1301349	UPPER FIREBACK ONLY
	1301600	DAMPER
	1301356	LOWER FIREBACK
	1203118	FIREBACK NUT (1/4 - 20 ACORN)
	1201326	FIREBACK BOLTS (1/4 - 20 X 1 HEX HD CAP)
7	NA-1301589	BAFFLE
8	1301384	RIGHT INSERT
9	1301376	LEFT INSERT
10	NA	LEFT-EAR-USE-FIREBACK-KIT-#5864
11	NA	RIGHT-EAR-USE-FIREBACK-KIT-#5864
12	NA	DAMPER-USE-FIREBACK-KIT-#5864

13	0005866	ADJUSTABLE CAST LINKAGE (EARLIER MODELS HAD WIRE LINKAGES)
	1201193	12 - 24 X 2 SL RD HD
	1202423	FL WASHER
	1203294	12 - 24 HEX NUT
	1201374	1/4 - 20 X 3/4 HEX HD CS
	1202461	WASHER
14	1201481	DAMPER SCREWS
15	NA-1301670	RES-II-FLUE-COLLAR-EXTENSION
	NA-1301414	RES-I-FLUE-COLLAR-EXTENSION
16	NA-1301668	RES-II-FLUE-COLLAR (ROUND)
	NA-1301481	RESOLUTE-I-FLUE-COLLAR
17	NA-1301449	THERMOSTAT COVER
18	NA-1301453	DOOR HANDLE HEAT SHIELD
19	NA	SINGLE DOOR
20	NA-1301473	DOOR INSERT
21	NA	DOOR INSERT CLAMP (CAST INTO DOOR PANEL NOT SEPARATE ANYMORE)
22	NA	DOOR CLAMP SCREW
23	1301406	RESOLUTE I TOP PLATE
	NA	RESOLUTE II TOP
24	NA	RESOLUTE II GRIDDLE
	NA	RESOLUTE I GRIDDLE
25	0004444	QUADRANT
26	1201338	1/4 - 20 X 1/2 HEX HD CAP
27	1201010	10 - 24 X 1 1/2 TRS PH
28	0004333	THERMOSTAT
29	1201960	THERM BALL CHAIN (PER FT)
30	1200493	1/4 - 20 X 5/8 SOCKET FL HD
31	1600820	DAMPER HANDLE
32	1201007	1/2 - 24 X 3/4 TRS HD PH
33	1201846	TENSION SPRING
34	1300671	SECONDARY AIR CONTROL COVER
35	1200881	LEFT INSERT SCREW
36	1200848	1/4 - 20 X 2 PH FL HD
37	NA-1301509	LEG (1-ONLY)
	NA-5002033	LEGS (SET OF 4)
38	0005807	LEG BOLTS (SET)
39	1200998	1/4 - 20 X 1/2 PH HD
40	5007499	TIE ROD SET
	1601640	RODS ONLY
41	1203210	NUT, HEX HEAD 1/4 - 20
42	1200055	SHAKER HOLE SCREW (THREADED)
43	1600546	DOOR PIN
44	5005423	THERMOSTAT FLAP W/EYELET
45	1601576	FLAP WIRE
46	1601396	GLASS CLIP-LONG
47	7000909	GLASS GASKET
48	1401136	GLASS
49	NA-1301418	GLASS FRAME

ITEMS NOT SHOWN

- 0004384 PAWL ASSEMBLY
- 1200436 STRIKER BOLT (1/4 - 20 X 1 SS SOC)
- 1203290 LARGE PAWL NUT (3/8 - 16 JAM NUT)
- 1200417 SET SCREW (1/4 - 20 X 1/4 SOC)
- 1203210 STRIKER BOLT NUT (1/4 - 20 HEX NUT)
- 1303051 ANDIRON (1)
- 1200998 HEAT SHIELD HOLE SCREW (10 - 24 X 1/2 PH TRUSS)
- NA THERMOSTAT FLAP WITH EYELET
- SUBSTITUTE** 1601519/1201985/1201972
- NA ASH FETTLE
- SUBSTITUTE** 1301779/1301773/1301784/ (2) 1303051/ (2) 1301782 / (2) 1201393 / (2) 1202472
- 000 4377 D-HANDLE
- 1600662 WOOD PART ONLY D HANDLE

REPAIR KITS

- NA **FRONT DOOR GLASS KIT**
(INCLUDES: RES II FRONT WITH DOORS MOUNTED, GLASS INSTALLED, TIE RODS, CEMENT, PAINT HANDLE & INSTRUCTIONS)
- 0005864 **FIREBACK KIT**
(INCLUDES: UPPER & LOWERE FIREBACKS & DAMPER, BOLTS FOR THE FIREBACKS & BOLTS FOR THE LEFT AND RIGHT INSERTS)

GASKETS

BELOW IS A LIST OF THE TYPE OF GASKET AND THE LENGTH NEEDED ON THE RESOLUTE

LOCATION	GASKET SIZE	QUANTITY NEEDED	PART NUMBER
LEFT DOOR	5/16" FIBERGLASS/NDLE MED DENS	2.0'	1203588
LFT DR GLASS	3/16" FIBERGLASS	1.75'	1203556
RIGHT DOOR	5/16" FIBERGLASS/NDLE MED DENS	3.0'	1203588
RT DR GLASS	3/16" FIBERGLASS	1.75'	1203556
GRIDDLE	5/16" ARMASEAL	3.25'	1203668
FLUE COLLAR	1/4" FIBERGLASS	3.0'	1203560