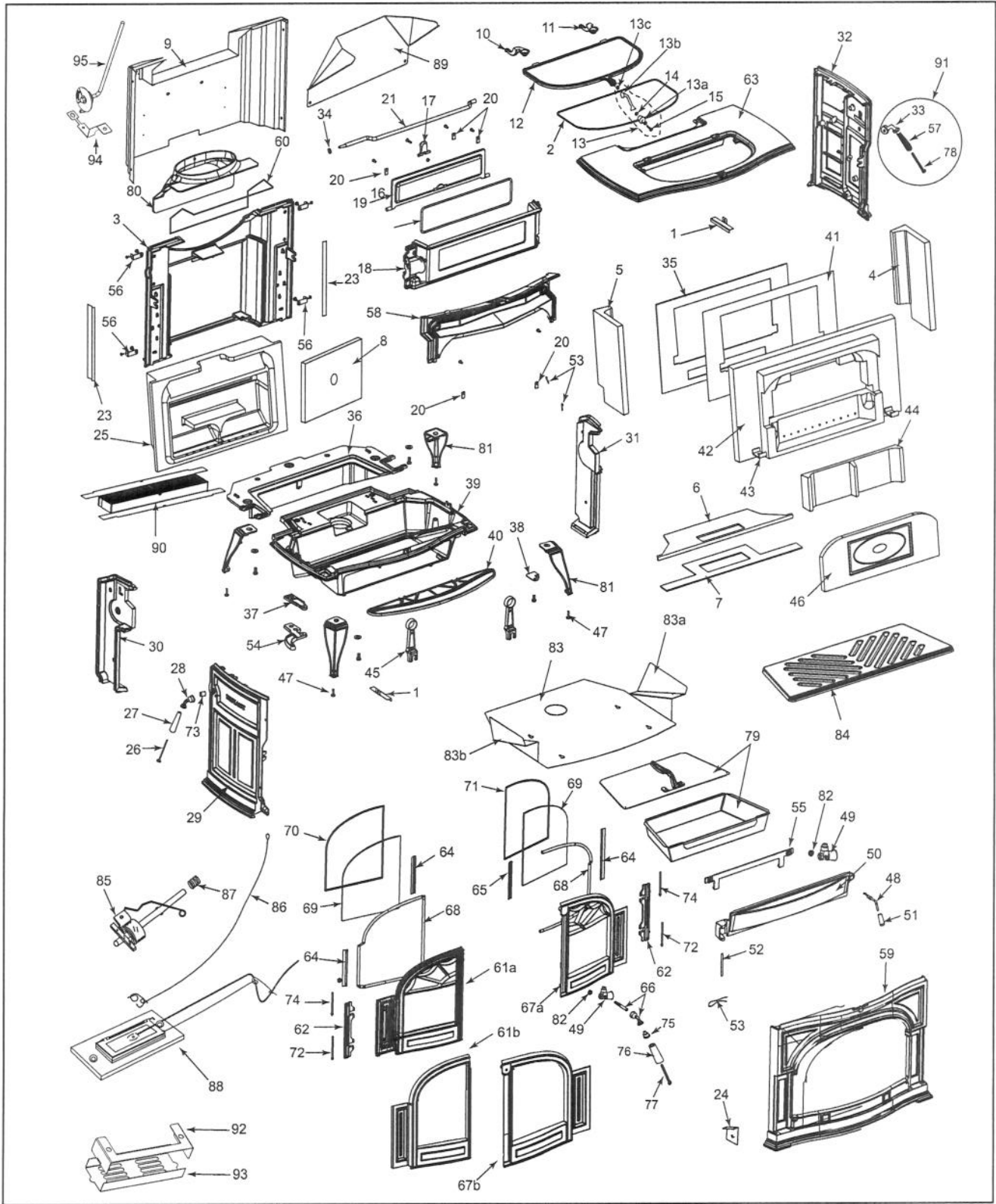


# Defiant® Wood Burning Stove Model 1975



Vermont Castings Group reserves the right to make changes in design, materials, specifications, prices and discontinue colors and products at any time, without notice.

## Defiant® Wood Burning Stove Model 1975 (continued)

Item Description	Part Number	Item Description	Part Number
1. Brick Support Bracket	30005279	50. Ashdoor	30002810
2. Griddle Gasket	1203668	50a. Ashdoor Gasket	1203589
3. Back	30005242	51. Ashdoor Handle (Wood)	1600663
4. Refractory Rt End	30005206	52. Ashdoor Hinge Rod	30002826
5. Refractory Lt End	30005207	53. Cotter Pin, Ashdoor	30001749
6. Refractory Support	30005233	54. Ashdoor Bottom Hinge Support	1300642
7. Gasket, Fiber, Refractory Support	30005237	55. Ashpan Bracket	30001908
8. Back Insulation Board	30005269	56. Rear Side Bracket	30002845
9. Outer Back	30005249	57. Thermostat Handle	1600660
10. Left Griddle Quadrant	30002399	58. Airwash Manifold, Frt	30005244
11. Right Griddle Quadrant	30002401	59. Front	See Chart Pg. 37
12. Griddle	30005257	60. Flue Collar Gasket	30002422
13. Complete Griddle Handle Assy	30002775	61a. Left Door	See Chart Pg. 37
13a. Griddle Handle Wood	1600661	61b. Left Door	See Chart Pg. 37
13b. Griddle Handle CRS-BN1	30002715	62. Door Hinge Strip	1300645
13c. Nut Hex 1/4-20	1203210	63. Top	See Chart Pg. 37
14. Griddle Handle Bushing	1201900	64. Glass Clip	30001715
15. Griddle Handle Bolt	1201308	65. Glass Clip (Right Door Only)	30001716
16. Damper Gasket	1203588	66. Front Door Handle & Shaft	30002717
17. Damper Ramp	1300643	67a. Right Door	See Chart Pg. 37
18. Damper Housing	30002821	67b. Right Door	See Chart Pg. 37
19. Damper <sup>1</sup>	30002816	68. Door Gasket	7000910
20. Damper Tab <sup>1</sup>	1601488	69. Glass Gasket	1203556
21. Damper Rod <sup>1</sup>	1600065	70. Left Door Glass	30005247
23. Gasket, Fiber Back Refractory	30005270	71. Right Door Glass	30005247
24. Rheostat Bracket	30002863	72. Lower Door Hinge Pin	30002727
25. Refractory, Engine - E/D	30005202	73. Spacer (for Damper rod)	1201779
26. Damper Handle Screw	1201310	74. Upper Door Hinge Pin	30002727
27. Damper Handle	1600664	75. Complete Handle Assy	30004175
28. Damper Handle w/Screw Assy	30002720	75a. Handle Base Stub	30002714
29. Left Side	See Chart Pg. 37	76. Wood Handle	1600664
30. Left Air Manifold	30002818	77. Handle Bolt	1201310
31. Right Air Manifold	30005243	78. Thermostat Handle Bolt	1201243
32. Right Side	See Chart Pg. 37	79. Ash Pan Assy	30001690
33. Thermostat Handle Base	30002716	80. Flue Collar	See Chart Pg. 37
34. Washer Damper Rod	30007257	81. Leg	See Chart Pg. 37
35. Fireback Plate, S/S	30005217	82. Hex Head Jam Nut	1203290
36. Inner Bottom	30005241	83. Bottom Heat Shield	30005037
37. Top Ashdoor Hinge	30002836	83a. Bottom Heat Shield Rt Wing	30005038
38. Door Handle Bracket	30002844	83b. Bottom Heat Shield Lt Wing	30005039
39. Bottom	30005240	84. Grate Bottom	30005234
40. Ashlip	See Chart Pg. 37	85. Thermostat Assy.	5005470
41. Gasket, Fireback	30005209	86. Thermostat Cable	5005471
42. Refractory, Fireback	30005203	87. Thermostat Friction Spring	1201846
43. Retainer, Fireback Refractory	30005248	88. Primary Air Valve Assy.	30005275
44. Refractory, Inner Cover	30005205	89. Heat Plate Vertical Flue	30005265
45. Andiron	30002827	90. Catalyst, Ceramic	30005353
46. Refractory, Access Cover	30007252	91. Thermostat Handle Assembly	30007067
47. Leg Leveller	1201745	92. Primary Air Cover	30007069
48. Ashdoor Handle Shaft	30005301	93. Primary Air Base	30007071
49. Pawl Assy 3/4 short adj	30005157	94. Temperature Probe	30007274
49a. Spring Washer	63D0069	95. Bracket, Temperature Probe	30007278

## Defiant® Wood Burning Stove Model 1975 (continued)

SHELL ENAMEL PARTS: DEFIANT® MODEL 1975						
Part Name	Classic Black	Biscuit	Bordeaux	Ebony	Majolica Brown	Twilight
Top	30002834	30002874	30006700	30002894	30004837	30007129
Left Side	30002832	30002872	30006697	30002892	30004834	30007126
Right Side	30002831	30002871	30006698	30002891	30004835	30007127
Flue Collar	30001576	30002947	30006701	30002910	30004815	30007130
Front	30002830	30002873	30006699	30002893	30004836	30007128
Ashlip	30002811	30002870	30006696	30002890	30004833	30007125
Left Door (61a)	30002813	30002876	30006703	30002896	30004842	30007132
Left Door Assembly*	30002854	30002879	30006773	30002899	30004840	30007133
Right Door (67a)	30002812	30002875	30006702	30002895	30004841	30007131
Right Door Assembly*	30002853	30002878	30006772	30002898	30004839	30007134
Leg	30002835	30002877	30006695	30002897	30004843	30007124

TRANSITION DOOR ENAMEL PARTS: DEFIANT® MODEL 1975					
Part Name	Classic Black	Biscuit	Bordeaux	Majolica Brown	Twilight
Left Door Assembly	30007175	30007177	30007179	30007181	30007183
Left Door (61b)	30007091	30007093	30007097	30007095	30007109
Right Door Assembly	30007176	30007178	30007180	30007182	30007184
Right Door (67b)	30007090	30007092	30007096	30007094	30007108

\*NOTE: Does not contain glass or glass gasket.

### NOTES:

In the diagram and throughout this manual, 'left' and 'right' mean as you face the front of the stove.

When ordering parts, be sure to mention the stove's model number. When ordering external parts, be sure to specify color.

The hardware in the Defiant® is in standard sizes; most bolts are 1/4" diameter by 20 threads per inch. Most hardware stores can supply replacement hardware if you specify bolt diameter, number of threads per inch and length. Fasteners inside the firebox should be replaced with stainless steel for ease of future disassembly.