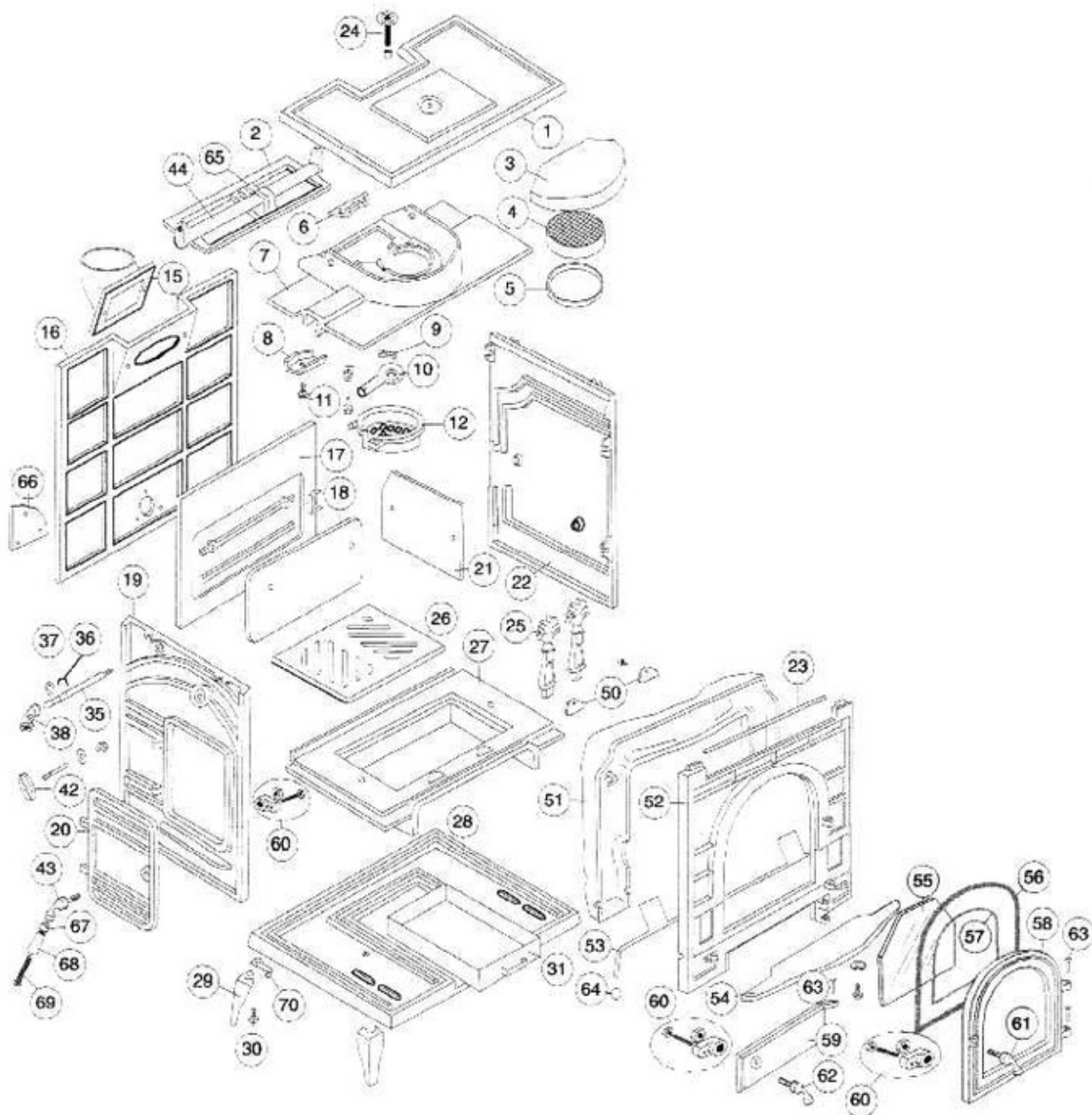


1993- Dutchwest small convection model 2460



1993- Dutchwest small convection model 2460

1.	Top	700-0960		
2.	Damper	700-0954	43.	Side door handle
3.	Refractory package	160-2515	44.	Damper crank
4.	Catalytic combustor	700-B566	50.	Manifold cap
4.	Interam gasket	120-3533	51.	Primary air manifold
6.	Inner top web	700-1110	52.	Front
7.	Inner top	700-1112	53.	Primary air control
8.	Inner top channel cap	700-0961	54.	Hearth
9.	Damper tab	160-1488	55.	Glass panel
10.	Air distributor	700-0952	56.	Front door gasket
11.	Web bolt	120-1338	57.	Glass gasket
12.	Baffle	700-0953	58.	Front door
15.	Flue collar	700-0969	59.	Ashdoor
16.	Back	700-1138	60.	Latch assembly
17.	Inner back	700-1173	61.	Front door handle
18.	Grate back	700-1166	62.	Ashdoor handle
19.	Left side	700-1120	63.	Hinge pin
20.	Side door	700-1121	64.	Brass ball
21.	Side wear plate	700-1198	65.	Damper adjuster
22.	Right side	700-1192	66.	Fan plate
23.	Gold bar	700-1179	67.	Handle stub*
24.	Probe thermometer	700-0948	68.	Ceramic handle*
25.	Andiron	700-1117	69.	Handle bolt*
26.	Grate	700-1118	70.	Handle holder
27.	Inner bottom	700-1136		
28.	Bottom	700-0958		
29.	Leg	700-0016		
30.	Leg bolt	120-1378		
31.	Ashpan	700-0G79		
35.	Damper operating rod	700-1145		
36.	Retaining ring	120-3058		
37.	Washer	120-2561		
38.	Damper handle	500-4267		
42.	Dial	700-1128		

* Included in 000-5854 Handle assembly

Note: 'Left' and 'right' mean *as you face the stove*.