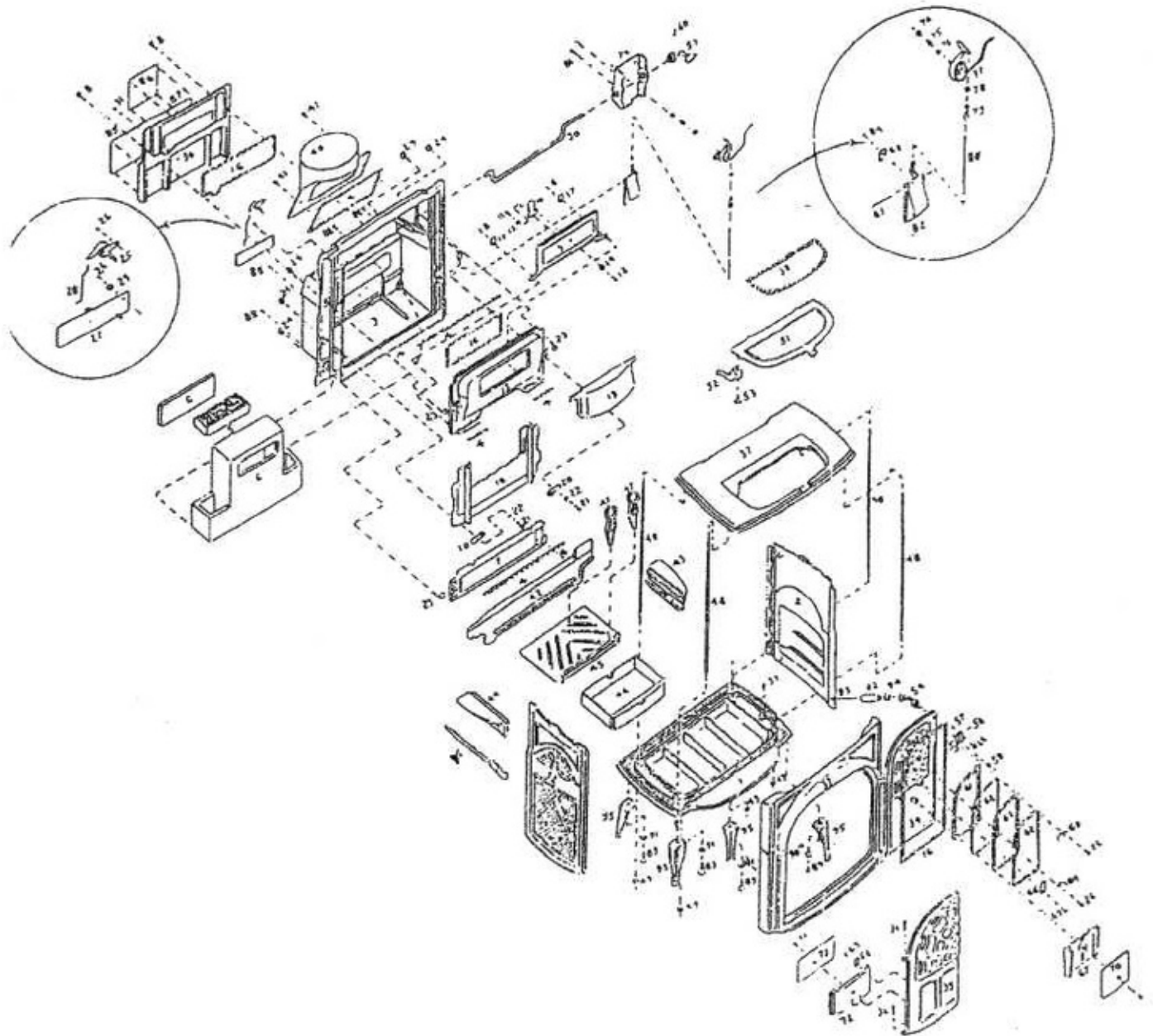


INTREPID II MODEL # 1303



Intrepid II

MODEL # 1303 INTREPID II

FEATURES: MANUFACTURED FROM 7/16/87 THROUGH 3/90
HAS GEISSER TESTING LAB LABEL
CATALYST ACCESS IS ON THE BACK OF THE STOVE ONLY
DOUBLE PANED GLASS

DIAGRAM #	ITEM #	PART DESCRIPTION
1	NA-1306700	BOTTOM
SUBSTITUTE:	1306764	
2	1306723	RIGHT END
3	1306707	BACK
	1306762	SECONDARY AIR COVER
4	1203556	3/16" FIBERGLASS GASKET (PER FOOT)
5	1602521	CATALYST
6	1602522	REFRACTORY COMPLETE (INCLUDES ACCESS PANEL)
	1602520	REFRACTORY ACCESS PANEL ONLY
7	1306704	LOWER FIREBACK
8	1200895	1/4 - 20 X 1/2" PH RD HD MACHINE SCR
9	1306701	DAMPER
	5004609	DAMPER ASSEMBLY
10	1306725	DAMPER D PLATE
11	1201529	1/4 - 20 X 5/8" SOCKET BUT HD CAP SCR
12	1202475	1/4 FLAT WASHER
13	1200434	1/4 - 20 X 3/4" KNURL CUP SOCKET SCR
14	1203210	1/4 - 20 HEX NUT
15	1306702	DAMPER HOUSING
16	1203588	5/16" FIBERGLASS GASKET (PER FOOT)
17	1601488	DAMPER TAB
18	1306703	UPPER FIREBACK
19	1306763	THROAT HOOD
20	1306724	LOWER FIREBACK CLAMP
21	1201456	3/8 - 16 X 1 1/2 HEX HD CAP SCREW
22	1202560	3/8 NARROW WASHER
23	1201583	3/8 - 16 X 1 BL OX
24	1203130	3/8 - 16 ACORN NUT
25	1601489	SECONDARY PROBE ASSEMBLY
26	1200980	10 - 24 X 1/4 PH PAN HD SCREW
27	1601490	SECONDARY AIR FLAP

28	1601486	SECONDARY AIR LINK
29	1201986	SHIM RING
30	NA	CATALYST ACCESS COVER
31	1201899	5/16" HOLE PLUG
32	1306709	LEFT END
33	NA 5004601	FRONT WITH DOORS-DOUBLE GLASS
	SUBSTITUTE: 5004608	
34	1306715	RIGHT DOOR- DOUBLE GLASS
OR	1306865	
35	1306716	LEFT DOOR- DOUBLE GLASS
OR	1306766	
36	1600535	DOOR PIN
	1202420	FELT DOOR PIN WASHER
37	NA	TOP
	SUBSTITUTE: 1308657	
38	1203668	5/16" GASKET WITH WIRE (PER FOOT)
39	1600561	SHAKER HOLE PLUG
40	1306561	FLUE COLLAR
41	1200901	1/4 - 20 X 3/4" PH RD HD MACHINE SCR
42	1306706	REAR AIRTUBE
43	1306713	RIGHT AIRTUBE
44	1306714	LEFT AIRTUBE
45	1306712	BOTTOM GRATE
46	5003522	ASH PAN ASSEMBLY W/ HANDLE
	1306493	ASH PAN COVER
	3000930	HANDLE
	1400951	PAN
47	1306717	ANDIRON
48	5007499	TIE RODS
49	1203211	TIE ROD NUT
50	1602523	DAMPER ACTUATOR ROD
51	1306356	GRIDDLE
52	0004444	QUADRANT
53	1201338	1/4 - 20 X 1/2 HEX HD CAP SCREW
54	0004370	FRONT HANDLE STUB
55	0004384	PAWL ASSEMBLY
56	1200417	SET SCREW
57	1200436	STRIKER BOLT
58	1203290	LARGE PAWL NUT
59	0004355	DAMPER HANDLE STUB
60	1200563	DAMPER HANDLE SET SCREW
61	1203556	3/16" FIBERGLASS GASKET (PER FOOT)
62	1401152	GLASS 1 PIECE, NOT IR COATED
63	5002801	GLASS GASKET WITH WIRE
64	1601393	GLASS CLIP RETAINER STEPPED
65	5005708	SLICER/ POKER
66	1601396	GLASS CLIP
67	1306719	RIGHT DOOR DEFLECTOR

68	1601394	GLASS CLIP FLAT
69	1200986	10 - 24 X 5/8 PH PAN HD MACHINE SCREW
70	1601497	RIGHT AIRGUIDE
71	1200991	10 - 24 X 3/4 PHILLIPS PAN HEAD
72	1306718	LEFT DOOR DEFLECTOR
73	1601496	LEFT AIRGUIDE
74	1306711	THERM COVER
75	1201846	TENSION SPRING
76	1202423	#10 FLAT WASHER
77	5005506	THERMOSTAT ASSEMBLY
78	1201985	JUMP RING
79	1201972	BALL CHAIN FITTING
80	1201960	BALL CHAIN (PER FT)
81	1200995	1/4-20 X 2 PH PAN HD SCR
82	1306710	PRIMARY AIR FLAP
83	1601551	PRIMARY AIR FLAP PIN
84	1200983	10 - 24 X 3/8 PHILLIPS PAN HEAD
88	1200998	10-24 X 1/2 PH TRS HD SCR
89	1201432	LEG BOLT
	0005807	LEG BOLT PACKAGE
90	1600600	HANDLE HOLDER
91	1202488	WASHER
92	0004342	CERAMIC HANDLE & SCREW
92	1600620	CERAMIC SHAFT
93	1201294	HANDLE PIN (SHORT 3 3/8)
94	1600650	NUB FOR CERAMIC HANDLE
95	1306333	LEG (1)
	5003457	LEGS (4)

ITEMS NOT SHOWN PACKED INSIDE THE STOVE

NA	STOVE BAG KIT
2000922	MANUAL

ENAMEL PARTS

***PREFIXES FOR ENAMEL PARTS**

131 RED
132 SAND
133 BLUE
134 MIDNIGHT

136 GRAY
139 ANITQUE BROWN
231 GREEN

- * 6710 AIR FLAP
- * 6707 BACK (N/A IN MIDNIGHT, GRAY, OR ANTIQUE BROWN - SUB. CLASSIC BLACK ONLY)
- * 6700 BOTTOM (AVAILABLE IN RED & ANTIQUE BROWN ONLY)
- * 6561 FLUE COLLAR (N/A IN GRAY - CURRENT COLORS ONLY)
- * 6444 FRONT (N/A IN MIDNIGHT, GRAY, OR ANTIQUE BROWN - CURRENT COLORS ONLY)
- * 6716 LEFT DOOR (N/A IN GRAY, OR GREEN - CURRENT COLORS ONLY)
- SUBSTITUTE:** * 6866/6766 (CURRENT COLORS ONLY)
- * 6709 LEFT END
- SUBSTITUTE:** * 8656 (CURRENT COLORS ONLY)
- * 6715 RIGHT DOOR
- SUBSTITUTE:** * 6765/6865 (RED, SAND, MIDNIGHT, GREEN, CLASSIC BLACK - *6765; BLUE - *6865)
- * 6723 RIGHT END
- SUBSTITUTE:** * 8655 (CURRENT COLORS ONLY)
- * 6711 THERMOSTAT COVER (N/A IN ANTIQUE BROWN)
- * 6760 TOP (AVAILABLE IN RED, MIDNIGHT, & GRAY ONLY)
- * 6333 LEG 1 (N/A IN GRAY OR ANTIQUE BROWN)

FRONTS WITH DOORS- SINGLE GLASS

5006088 FRONT WITH DOORS RED
5006092 FRONT WITH DOORS SAND
5006097 FRONT WITH DOORS BLUE
5006103 FRONT WITH DOORS MIDNIGHT
NA FRONT WITH DOORS BROWN

LEG SETS

5006016 SET OF 4 LEGS SAND
5006011 SET OF 4 LEGS RED
5006020 SET OF 4 LEGS BLUE
5006030 SET OF 4 LEGS MIDNIGHT
5006016 SET OF 4 LEGS GREEN